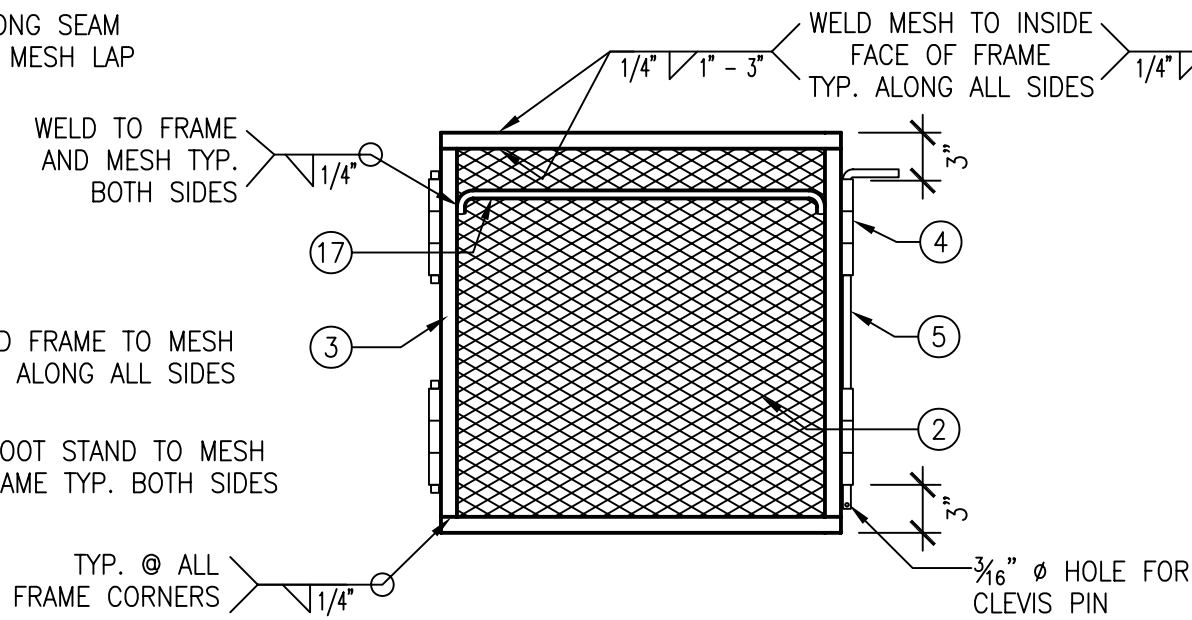
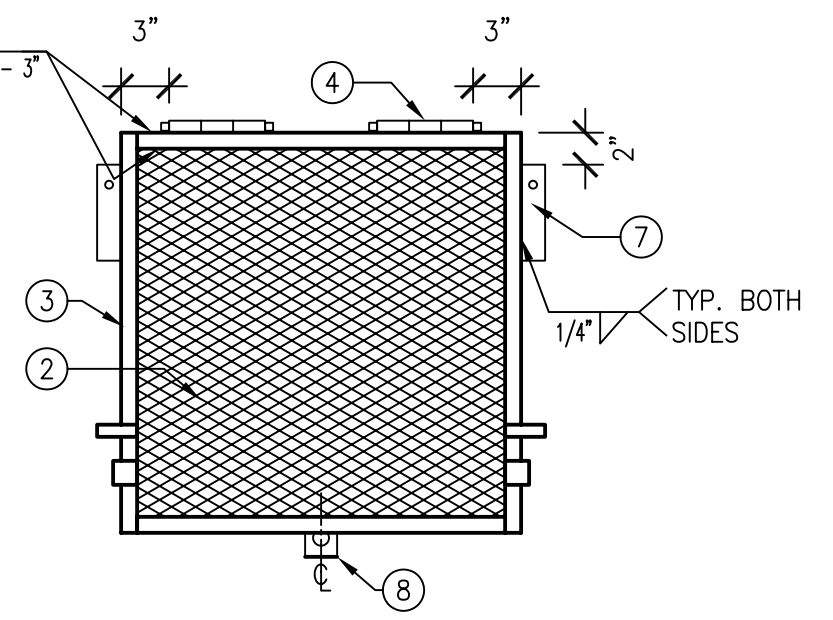


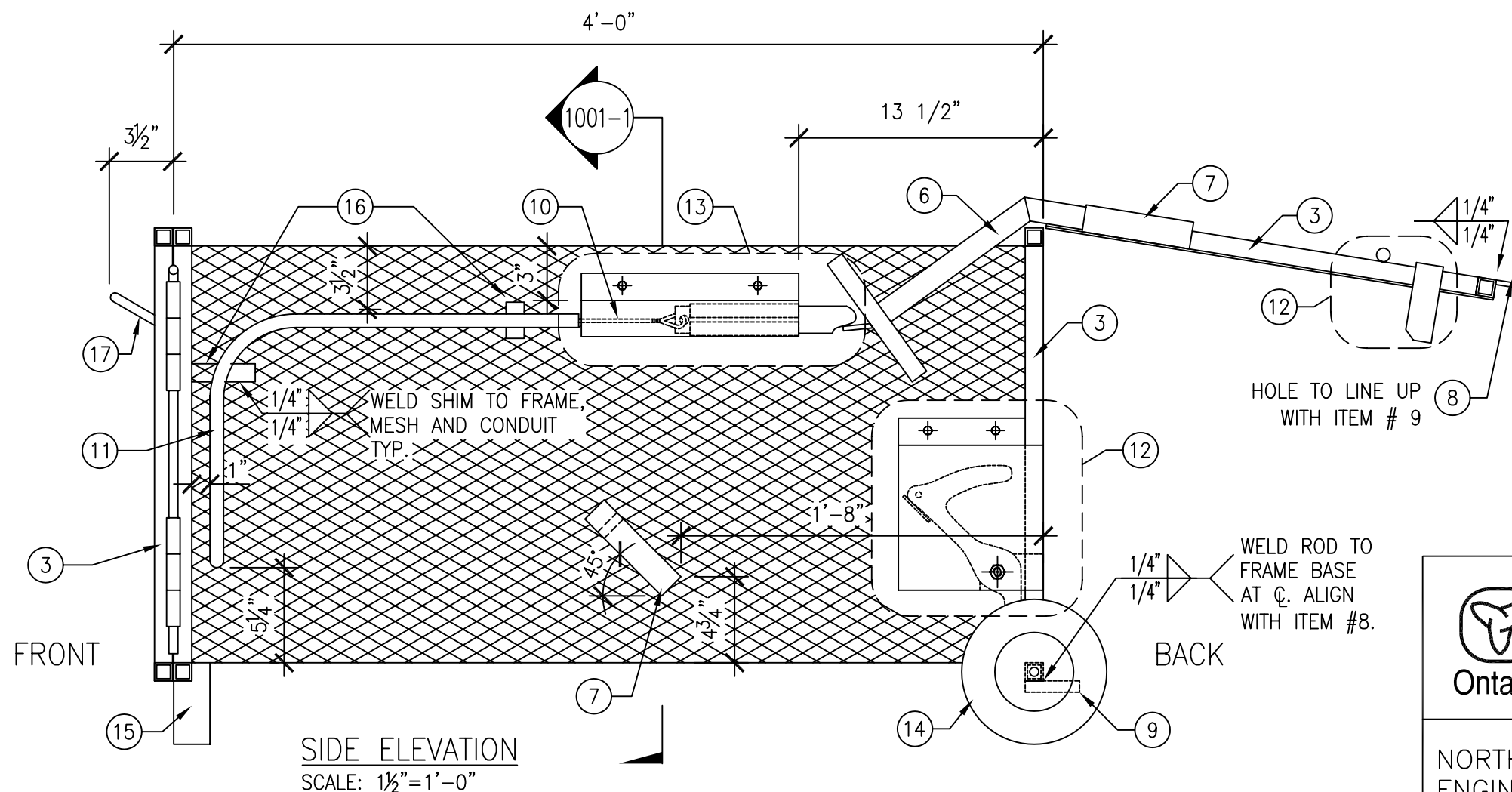
1001-1
1001 SECTION
SCALE: 1"=1'-0"



FRONT DOOR
SCALE: 1"=1'-0"



BACK DOOR
SCALE: 1"=1'-0"



SIDE ELEVATION
SCALE: 1/2"=1'-0"

* SEE DRAWING 1002 FOR ITEM DETAILS, AND 1003 FOR ITEM NUMBER DESCRIPTIONS.

NOTES:

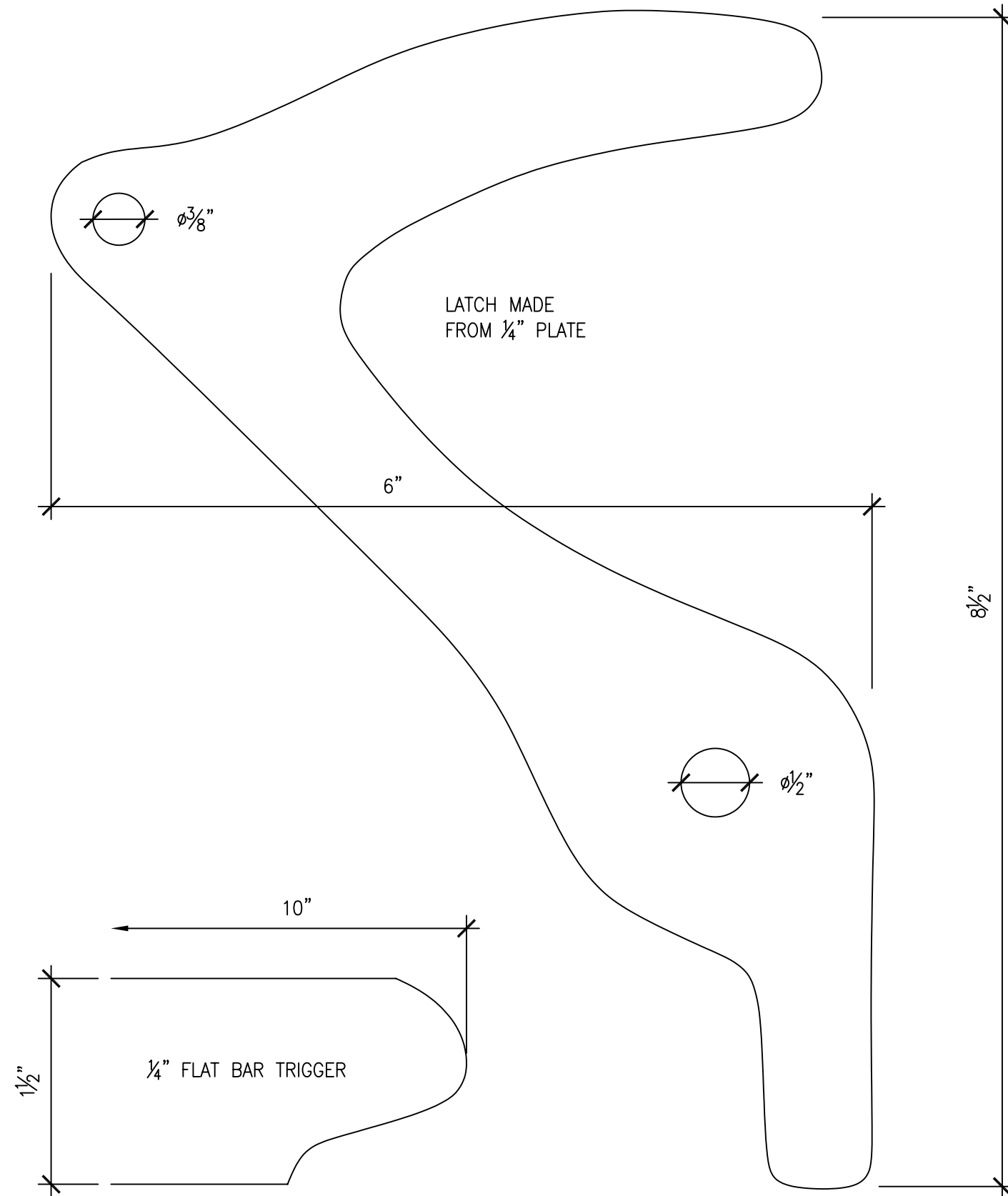
1. FLAT EXPANDED MESH USED TO MINIMIZE INJURIES TO THE BEARS CLAWS OR TEETH. DO NOT SUBSTITUTE ANY OTHER MESH.
2. CAGE BODY TO BE CONSTRUCTED BY A SINGLE 4' X 8' SHEET OF 1/2" #13 F FLAT EXPANDED METAL SHEET.
3. UNLESS NOTED OTHERWISE ALL WELDS SHALL BE 1/4" FILLET WELDS.
4. ALL WELDING SHALL CONFORM TO CSA W59-M AND BE PERFORMED BY WELDERS CURRENTLY QUALIFIED UNDER CSA W59-M.



Ministry of
Natural
Resources

NORTHWEST REGION
ENGINEERING SERVICES

| | | | |
|--|-------------------|------------------|-----------|
| PROJECT CAMBRIAN DESIGN CUB BEAR TRAP | | | |
| DRAWING TITLE SECTION & ELEVATIONS | | | |
| SCALE AS SHOWN | DATE JAN.10/05 | | |
| DWN. BY BCD | CHKD. BY KCB | DWG. No. 1001 | REV. 0 |



| No. | ITEM DESCRIPTION | QTY. |
|-----|---|-------------------------|
| 1 | 4'x 8' SHEET OF 1/2" #13 F FLAT EXPANDED MESH BENT AT CORNERS | 1 |
| 2 | 2'-1"x 2'-1" PIECE OF 1/2" #13 F FLAT EXPANDED MESH | 2 |
| 3 | 1'-11"x 1'-11" (INSIDE) FRAME MADE FROM 1"x 1"x 1/8" SQUARE TUBING | 4 (32' OF TUBING) |
| 4 | 1/2"φ PIPE HINGES c/w HINGE PINS -SEE DETAIL 1002-1 | 6 |
| 5 | 1/2" φ ROUND BAR BENT AT TOP (TO FIT LOSELY IN HINGES -MACHINED IF NECESSARY) | APPROX. 2'-0" OF BAR |
| 6 | WEIGHTED ARM -SEE DETAIL 1002-2 | 2 |
| 7 | 1 1/2"x 1 1/2"x 1/8" SQUARE TUBING SEE DETIAL 1002-3 | 4 |
| 8 | 2"x 1 1/2" 1/4" PLATE WITH 1"φ HOLE | 1 |
| 9 | 3" LONG x 5/8"φ ROD SEE DETAIL 1002-4 | 1 |
| 10 | 3/16" BRAIDED STEEL CABLE WITH EYELET AND SLEEVE | APPROX. 3'-10" |
| 11 | 3/4" ELECTRICAL CONDUIT (SLEEVE FOR TRIGGER CABLE) | APPROX. 3'-0" |
| 12 | LATCH -SEE DETAIL 1002-5 | 2 |
| 13 | TRIGGER -SEE DETAIL 1002-6 | 1 |
| 14 | 8" RUBBER TIRE -SEE 1002-7 FOR AXLE DETAIL | 2 |
| 15 | 1/4"x 2" BENT FLAT BAR FOOT STAND | 1 |
| 16 | 2" PIECE & 3 1/2" PIECE 1"x 1"x 1/8" SQUARE TUBING (AS SHIMS) | 2 |
| 17 | 1/2" ROD (AS HANDLE) | APPROX. 2'-7" |



Ministry of
Natural
Resources

PROJECT
CAMBRIAN DESIGN CUB BEAR TRAP

DRAWING TITLE
**LATCH & TRIGGER TEMPLATES
& ITEM No. DESCRIPTIONS**

NORTHWEST REGION
ENGINEERING SERVICES

SCALE
1"=1"

DATE
JAN.10/05

DWN. BY
BCD

CHKD. BY
KCB

DWG. No.
1003

REV.
0